



# **Mounting Instructions**

## **ABT-LLK für MQB - Audi**

### **TT RS**



# Table of contents

<b>1 Hints .....</b>	<b>3</b>
<b>2 Scope of delivery.....</b>	<b>4</b>
<b>3 Preparations at the vehicle .....</b>	<b>5</b>
<b>4 Intercooler Installations .....</b>	<b>10</b>
<b>5 Completion.....</b>	<b>11</b>



---

## **1 Hints**



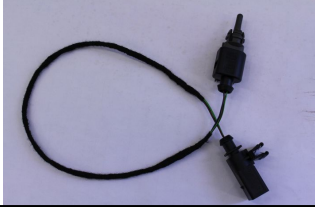

Mounting Instruction ABT LLK für MQB

Vehicles: Audi TT RS

Assembly time: approx. 75 minutes

## 2 Scope of delivery

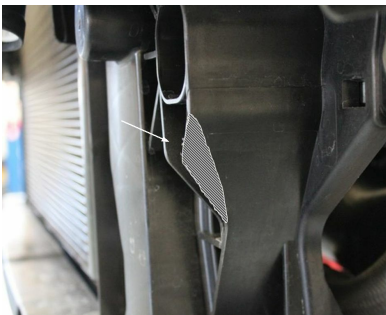
Please check the completeness of delivery before starting the installation. In case the delivery is incomplete, please contact ABT Sportsline GmbH.

Quantity	Picture	Description
1		ABT intercooler
1		Bracket for outside temperature sensor
1		wiring harness for outside temperature sensor
1		lens head screw M5x12

### 3 Preparations at the vehicle



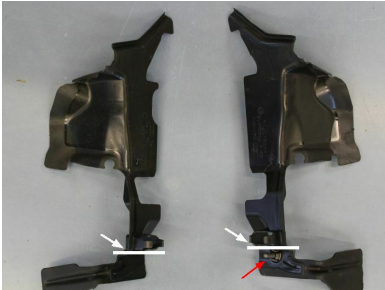
Remove the original intercooler as specified by the manufacturer.



Remove the marked area by sawing/grinding. It's located on the left side in driving direction of the lock support.



Remove the air duct on the left and the right side.

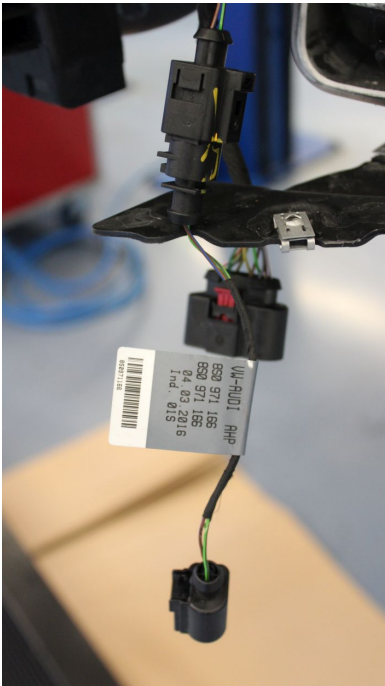


Remove the outside temperature sensor and cut the air duct on the marked point as shown in the picture.



Reassemble the air duct to the car.

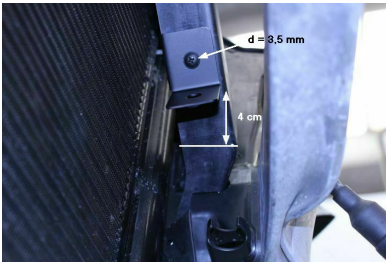
- Overall view



Replace the cable of the outdoor temperature sensor with the enclosed cable set.



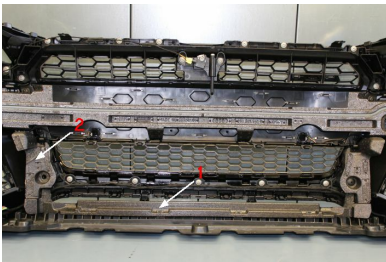
Lay the cable in the direction of the lock carrier so that the cable of the outside temperature sensor is guided through the gap of the ventilation hose.



Fix the supplied holder 4 cm from the marked line to the bottom edge of the holder and drill a 3.5 mm hole.



Now mount the enclosed holder with the M5x12 head screw so that the outside temperature sensor is protected behind the lock support. Fit the outside temperature sensor in the holder and connect it to the installed cable.



Remove the marked styrofoam parts.



1 - Saw the marked part of the styrofoam off.



2 - Saw the marked part of the styrofoam off.

After the work is done reassemble both styrofoam parts to the front apron again.

## 4 Intercooler Installations



Mount the ABT intercooler as specified by the manufacturer.

---

## 5 Completion

Replace all the parts to the vehicle.

Read out the error memory and delete if necessary.

Start the engine and take a test drive.

ABT Sportsline GmbH

Johann-Abt-Str. 2

D-87437 Kempten / Allgäu

Phone: +49 (0)831 / 57140 - 0

Fax: +49 (0)831 / 72666

Email: [info@abt-sportsline.de](mailto:info@abt-sportsline.de)

[www.abt-sportsline.de](http://www.abt-sportsline.de)